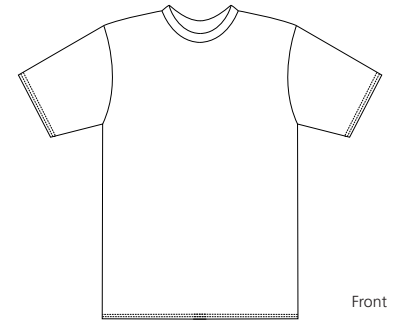
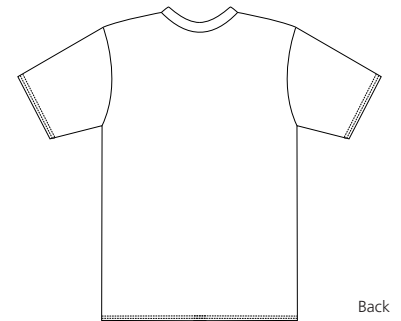


Short Sleeve Compression T-Shirt

Sport-Tek
By Port Authority®



Front



Back

T250

- * 4.9-ounce * 79/21 Poly/spandex * Abrasion resistant
- * Antimicrobial technology helps control odor

Care Instructions:

Machine wash cold with like colors.
Do not bleach.
Tumble dry low. Warm iron if necessary.

Finished Measurements in Inches

| Size | XS | S | M | L | XL | 2XL | 3XL | 4XL |
|--------|-------|------|------|------|------|------|------|------|
| Width | 14.75 | 16 | 17.5 | 19 | 20.5 | 22 | 24 | 26 |
| Length | 23.5 | 24.5 | 26.5 | 27.7 | 28.5 | 30.5 | 32 | 34 |
| Sleeve | 5.75 | 6 | 6.75 | 7 | 7.25 | 7.75 | 8.25 | 8.75 |
| Neck | 6.5 | 6.5 | 6.75 | 6.75 | 7.25 | 7.5 | 8.5 | 9.5 |

Chest width measured 1" below armhole. Body length measured from high point shoulder to hem.
Sleeve length measured from shoulder seam to hem. Neck width measured seam to seam.

Colors

Black
White

Please Note:
Colors shown are approximate and for reference only. For closest match see PMS colors, or for exact match, returnable samples and grommited samples are available.

Due to the nature of performance fabrics, special care must be taken when printing and drying

Color Chart

| Colors | Black | White |
|-------------|---------------|-----------|
| Textile PMS | 19-5320TC | 11-0601TC |
| General PMS | Process Black | No Match |