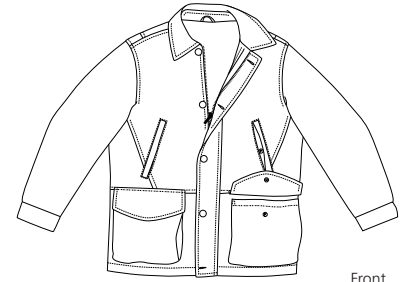


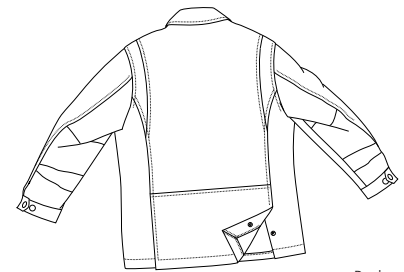


RED HOUSE

THE WINE COUNTRY LIFESTYLE



Front



Back



Care Instructions:
Professional leather clean only.

CALF SUEDE JACKET

RH27

Interior leather patch features the Red House story.
Premium suede leather shell
100% cotton upper body lining
100% Acetate quilted nylon sleeve and lower body lining
Slash pockets, patch pockets and an interior zip pocket
Antique brass zipper front, buttoned storm flap and cuffs

Finished Measurements in Inches								
Size	XS	S	M	L	XL	XXL	Plus 1X	Plus 2X
Chest	44	46	49	51	55	58	61	64
Body	30	30.5	31	31.5	32	32.5	32.5	33
Sleeve	34	34.5	35	35.5	36	36.5	37	37.5
Shoulder	19	19.5	20.25	21	21.75	22.5	23.25	24
Sweep	42	44	47	50	53	56	59	62

Chest measured 1" under arm hole. Body length measured from center back neck seam to hem.
Sleeve measured from shoulder seam to hem. Shoulder width measured from arm hole to arm hole.
Sweep measured side seam to side seam.

Colors	
	Brown

Please Note:
Colors shown are approximate and for reference only. For closest match see PMS colors, or for exact match, returnable samples and samples are available.

Color Chart	
Colors	Brown
Textile PMS	Natural variations in the leather prevent match.
General PMS	Natural variations in the leather prevent match.
Madeira (Tonal Emb)	Natural variations in the leather prevent match.