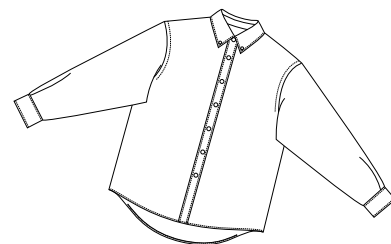


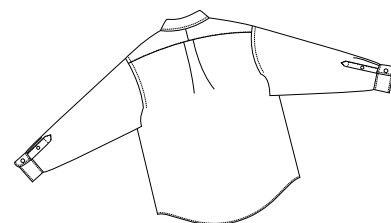


RED HOUSE

THE WINE COUNTRY LIFESTYLE



Front



Back

SILK/LINEN WOVEN SHIRT

RH26

Silk/Linen Woven Shirt

The timeless texture of linen woven with our luxurious silk.

- 55/45 silk/linen
- Button-down collar
- Shirttail hem
- Red House engraved buttons and embroidery on sleeve plackets



Care Instructions:
Dry clean only.
Cool iron reverse side as needed.

Finished Measurements in Inches								
Size	XS	S	M	L	XL	2XL	3XL	4XL
Chest	20	21.5	23	24.5	26	27.5	29	30.5
Body	26.5	28	30	31.5	32.5	33.5	34.5	35
Sleeve	32	33.5	34.75	35.5	37	38	39	40
Sweep	20	21.5	23	24.5	26.25	27.5	29	30.5
Shoulder	17.5	18.5	19.5	20.5	21.5	22.5	23.5	24.5

Chest measured 1" under armhole. Shoulder measured from armhole to armhole. Length measured from center back neck seam to hem. Sleeve measured from center back neck seam to cuff. Sweep measured straight across.

Colors	
	Arcadian Green
	Cadmium Orange
	Marina Blue
	Navy

Please Note:
Colors shown are approximate and for reference only. For closest match see PMS colors, or for exact match, returnable samples and grommets are available.

Color Chart				
Colors	Arcadian Green	Cadmium Orange	Marina Blue	Navy
Textile PMS	14-0232TC	16-3060TC	17-3936TC	19-4025TC
General PMS	359C	1575C	659C	534C
Madiera (Tonal Emb)	1377	1152	1275	1277

Red House Embroidery Recommendations *Provided by the Embroidery Trade Association*

RH26 – Silk/Linen Woven Shirt

Backing: 1 oz cut-away with inner layer ripstop patterned nylon
Thread: 40 weight
Soluble topping recommended for small details and letters.
Needle: Ball point

Notes: A good shirt for monograms on cuffs and collars, as well as crest designs. Small satin and fill patterns work nicely on this fabric. Due to the softness of the fabric, large fills over 2 inches and letters over 1 inch tall will cause distortion. The softness will also permit the letters to sink in. To keep them up, use an edgewalk underlay.

This information is intended to serve as a guideline for embroiderers. SanMar is not responsible for the compromised integrity of Red House fabrics due to embroidery or decoration.