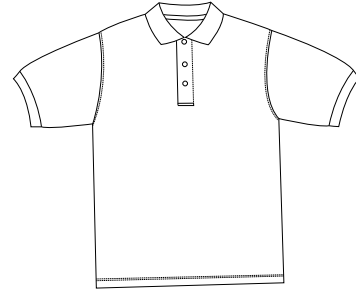


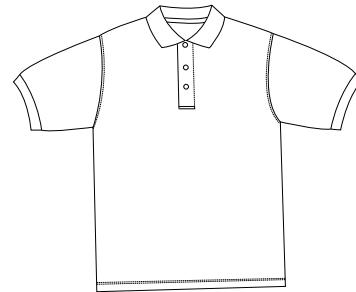
L459

PORT | AUTHORITY®

Ladies Shadow Stripe Interlock Sport Shirt



Front



Back

Care Instructions:

Machine wash with like colors.
Do not bleach.
Tumble dry low.
Cool iron if needed.

Colors

	Lemon Drop
	Chili Red
	Navy
	White
	Blueberry
	Light Pink
	Black

Designer Notes: The superb feel of interlock knit is striking on its own. Add in the subtle glow of jacquard knit shadow stripes and you have one of our most intriguing styles to date. A classic in fit and construction, this shirt takes a break from the ordinary with dashing, modern design.

Fabric/Style: 6.2-ounce, 58/42 cotton/poly interlock is easy care, traditional, relaxed look flat knit collar, 3-button placket with pearlized buttons, hemmed sleeves.

Finished Garment Measurement

Size	XS	S	M	L	XL	XXL	1X	2X
Chest Width	19	20	21	22	23.5	25	27.5	30.5
Body Length	23	23.5	24	24.5	25.5	26	29	30
Sleeve Length	7.25	7.5	7.75	8	8.25	8.5	9.5	10.5

Color Chart

Colors	Lemon Drop	Chili Red	Navy	White	Blueberry	Light Pink	Black
Textile PMS	No Match	No Match	No Match	No Match	No Match	No Match	No Match
General PMS	135 C	7427 C	7546 C	Warm Grey 1 C	535 C	496 C	Process Black C