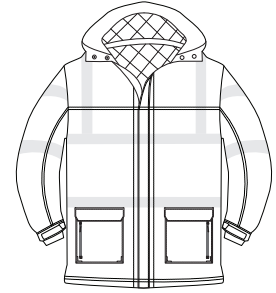
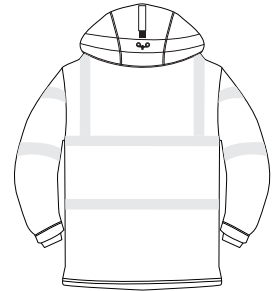


Safety Heavyweight Parka

PORT AUTHORITY®



Front



Back

J799S

* 100% polyester shell, 100% polyester quilted lining * 8000MM waterproof rating * 3000G/M2 breathability rating * 2"-wide reflective taping on front, back and arms * Meets ANSI Class 3 standards * Snap-off adjustable hood * External storm flap * Two-way zipper with ergonomic pull * Waterproof welded sleeve pocket * Handwarmer pocket * Bellow pockets for storage * Molded adjustable Velcro tab cuffs * Interior MP3/radio pocket * Port Pocket™ for easy embroidery access

Care Instructions:
Machine wash cold.
Do not dry clean, do not iron.
Do not bleach, do not tumble dry.

Finished Measurements in Inches

Size	XS	S	M	L	XL	2XL	3XL	4XL
Chest	46	49	52	55	58	61	64	67
Length	33.5	34	34.5	35	35.5	36	36.5	37
Sleeve	34	36	36.5	37.5	38.5	39.5	40.5	41.5
Areas for Decoration	Left Chest / Right Chest / Full Back				Port Pocket™		NA	

Colors

Safety Yellow/Black/Reflective

Please Note:
Colors shown are approximate and for reference only. For closest match see PMS colors, or for exact match, returnable samples and grommeted samples are available.

Collar measured center back seam to top hem, Chest width 1" below arm hole, Side pocket from top to bottom of opening, Body length from back neck seam to hem, Sleeve length from center back seam to hem

Color Chart

Jacket Colors	Safety Yellow/Black/Reflective
Textile PMS	No Match
General PMS	7506 C