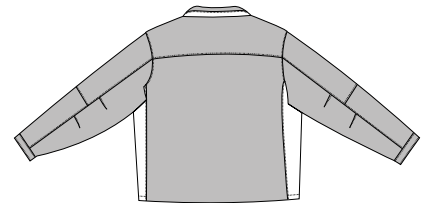


# MRX™ Jacket

PORT AUTHORITY®



Front



Back

## J765

- \* 78/22 nylon/cotton oxford shell \* 100% polyester mesh upper body lining
- \* 100% nylon taffeta lining on lower body and sleeve \* Locker loop
- \* Inside chest pocket with hook and loop closure
- \* Lower slash pockets with tricot lining
- \* Port Pocket™ engineering on left chest and full back for easy embroidery access

**Care Instructions:**  
Machine wash warm. Wash inside out with like colors. Line dry. Do not bleach. Do not iron. Do not dry clean.

### Finished Measurements in Inches

Size	XS	S	M	L	XL	2XL	3XL	4XL
Length	27	27.5	28	28.5	29	29.5	30	30.5
Chest	22.5	24	25.5	27	28.5	30	31.5	33
Sleeve	32	34	36	37	38	38.5	39	39.5
Collar Height	2.75	2.75	2.75	2.75	2.75	2.75	2.75	2.75
Areas for Decoration	Left Chest, Full Back			Port Pocket™		L Inside Zipper, Mid Back Lining		

Collar measured center back seam to top hem. Chest width measured 1" below arm hole.  
Body length measured from back neck seam to hem. Sleeve length measured from center back seam to hem.

### Colors

Black/Grey/Red

**Please Note:**  
Colors shown are approximate and for reference only. For closest match see PMS colors, or for exact match, returnable samples and grommited samples are available.

### Color Chart

Colors	Black	Trim Colors	Grey
Textile PMS	19-4005TC	Textile PMS	18-5105TC
General PMS	426C	General PMS	425C