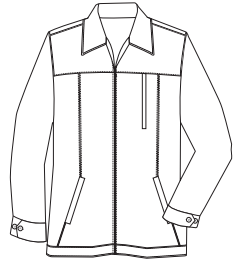


Textured Microfiber Jacket



Front



Back




J741

- * 100% poly textured microsuede fabric * 3-ounce polyfill * Flannel lining on top
- * Quilted lining on bottom * Left chest pocket * Two zippered pockets
- * Adjustable cuffs with horn-tone buttons * Zippered internal pocket
- * Internal cell phone pocket * Internal piping details
- * Port Pocket™ for easy embroidery

Care Instructions:
 Mach wash cold. Tumble dry.
 Cool iron if needed.
 Do not bleach.

Finished Measurements in Inches								
Size	XS	S	M	L	XL	2XL	3XL	4XL
Length	26.5	27	27.5	28	28.5	29	29.5	30
Chest	22	23.5	25	26.5	28	29.5	31	32.5
Sleeve	33	34	35.5	36.5	37.5	38.5	39	39.5
Areas for Decoration	Left Chest & Full Back		Port Pocket™			NA		

Collar measured center back seam to top hem. Chest width measured 1" below arm hole.
 Body length measured from back neck seam to hem. Sleeve length measured from center back seam to hem.

Colors	
	Black
	Navy
	Cinder

Please Note:
 Colors shown are approximate and for reference only. For closest match see PMS colors, or for exact match, returnable samples and grommited samples are available.

Color Chart			
Jacket Color	Black	Navy	Cinder
Textile PMS	No Match	No Match	No Match
General PMS	Process Black C	532 C	7519 C