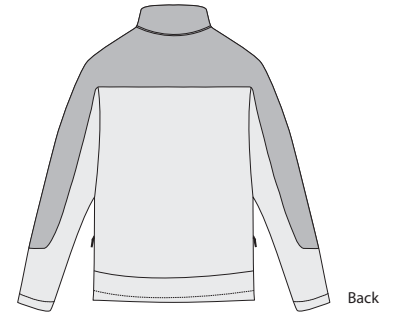


1/2 Zip Lightweight Soft Shell Jacket

PORT AUTHORITY®



Front



Back

J724

* 100% polyester stretch interlock shell bonded to polyester interlock with laminated film insert to repel water and wind * Constructed from fine yarn for a luxurious hand * 1000MM water-proof rating * 1000G/M2 breathability rating * Cinch toggle for weather protection on back of collar * Comfortable chin guard/storm flap * Ergonomic zipper pull * Zippered chest pocket * Adjustable molded tab cuffs * Left side seam zipper for easy on/off * Open hem with side toggle and drawcord for adjustability *

Care Instructions:
Machine wash cold.
Do not dry clean, do not iron.
Do not bleach, do not tumble dry.

Finished Measurements in Inches

Size	XS	S	M	L	XL	2XL	3XL	4XL
Length	27.25	27.75	28.25	29	29.75	30.5	31.25	32
Chest	24	25	26	27	28.5	30	31.5	33
Sleeve	31	33	35	36	37	37.5	38	38.5
Collar Ht	2.75	2.75	2.75	2.75	2.75	2.75	2.75	2.75
Chest Pkt	5.75	5.75	5.75	6	6	6	6	6
Areas for Decoration	Left Chest / Right Chest / Full Back				Port Pocket™		NA	

Collar measured center back seam to top hem, Chest width 1" below arm hole, Side pocket from top to bottom of opening, Body length from back neck seam to hem, Sleeve length from center back seam to hem

Colors

	Sand Dune/Black
	Dark Slate/Black
	Chili Red/Dark Slate
	Black/Black
	Marina Blue/Black

Please Note:
Colors shown are approximate and for reference only. For closest match see PMS colors, or for exact match, returnable samples and grommeted samples are available.

Color Chart

Jacket Colors	Sand Dune	Dark Slate	Chili Red	Black	Marina Blue
Textile PMS	No Match	No Match	No Match	No Match	No Match
General PMS	8003 C	425 C	201 C	Process Black C	646 C