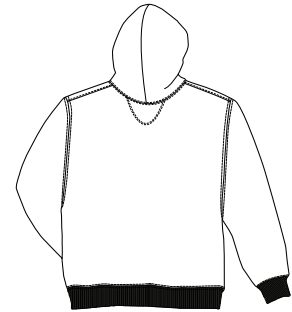


Super Heavyweight Pullover Full ZIP Sweatshirt

PORT AUTHORITY®



Front



Back

F282

*12-ounce, cross grain 80/20 ring spun combed cotton/poly * 2 x 2 rib knit cuffs and waistband with spandex * Rib knit side gussets * Contrast twill taped neck * 2-ply hood with dyed-to-match lining and drawstring * Set-in sleeves * Kangaroo pouch pockets

Care Instructions:
Machine wash cold.
Do not dry clean, do not iron.
Do not bleach, do not tumble dry.

Finished Measurements in Inches

Size	XS	S	M	L	XL	2XL	3XL	4XL
Length	27.5	28.5	29.5	30.5	31.5	32.5	33.5	34.5
Chest	19	21	23	25	27	29	31	33
Sleeve	34	36	37	38	39	40	41	42
Areas for Decoration	Left Chest / Right Chest / Full Back			Port Pocket™		NA		

Colors

	Navy
	Royal
	Black
	Red
	Athletic Heather
	Brown

Collar measured center back seam to top hem, Chest width 1" below arm hole, Side pocket from top to bottom of opening, Body length from back neck seam to hem, Sleeve length from center back seam to hem

Please Note:
Colors shown are approximate and for reference only. For closest match see PMS colors, or for exact match, returnable samples and grommated samples are available.

Color Chart

Jacket Colors	Navy	Royal	Black	Red	Athletic Heather	Brown
Textile PMS	No Match	No Match	No Match	No Match	No Match	No Match
General PMS	532 C	534 C	Process Black C	193 C	Cold Grey 4 C	490 C