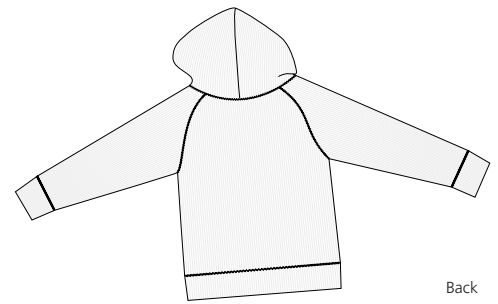


Ladies Full Zip Hoodie



Front



Back

DT227

- * 100% ring spun combed cotton
- * 2 x 1 rib knit body
- * Jersey-trimmed hood
- * Full zipper
- * Junior fit

Care Instructions

Machine wash cold. Wash inside out with like colors. Do not bleach. Tumble dry low. Warm iron if necessary.

Finished Measurements in Inches

| Size | S | M | L | XL | XXL | 1X | 2X |
|--------|------|-------|------|-------|------|-------|-------|
| Chest | 14.5 | 15 | 16 | 17 | 18.5 | 20 | 22 |
| Body | 23 | 24 | 25 | 26 | 27 | 28.5 | 29.5 |
| Sleeve | 29.5 | 30.5 | 32 | 32.5 | 33 | 34 | 34.5 |
| Neck | 9 | 10.25 | 10.5 | 10.75 | 11 | 11.25 | 12 |
| Pocket | 7.5 | 8.5 | 9.5 | 10.5 | 11.5 | 12.25 | 13.75 |

Chest width measured 1" below arm hole. Body length measured from high point shoulder to hem. Sleeve length measured from center back seam to hem. Neck measured by width, seam to seam. Pocket measured by width at top

Colors

| | |
|--|---------------------|
| | Pink |
| | Heathered Chocolate |
| | White |
| | Midnight Black |
| | Cranberry |

Please Note:

Colors shown are approximate and for reference only. For closest match see PMS colors, or for exact match, returnable samples and grommated samples are available.

Color Chart

| Body Colors | Pink | Heathered Chocolate | White | Midnight Black | Cranberry |
|-------------|------------|---------------------|------------|----------------|------------|
| Textile PMS | 13-1904 TC | No Match | 11-4201 TC | 19-0303 TC | 19-1850 TC |
| General PMS | 182 C | No Match | 663 C | Process Black | 1955 C |